

Session Name: 2-18-2020 9-30 PM

Date Created: 2/18/2020 5:02:28 PM

Active Participants: 40 of 40

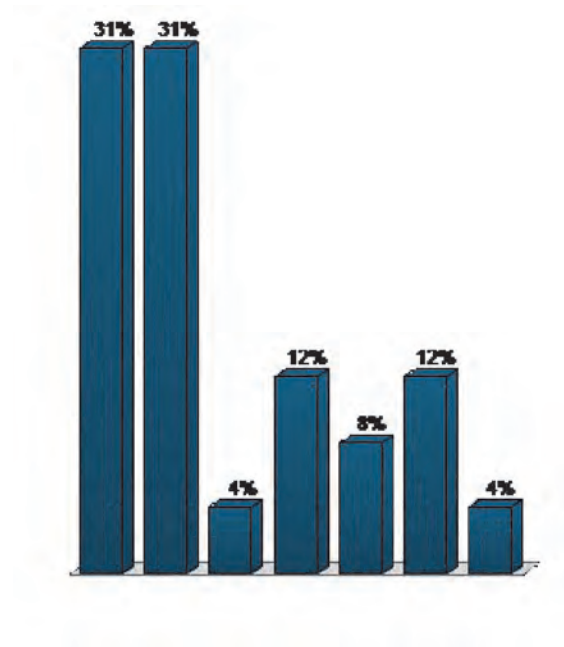
Average Score: 0.00%

Questions: 14

Results by Question

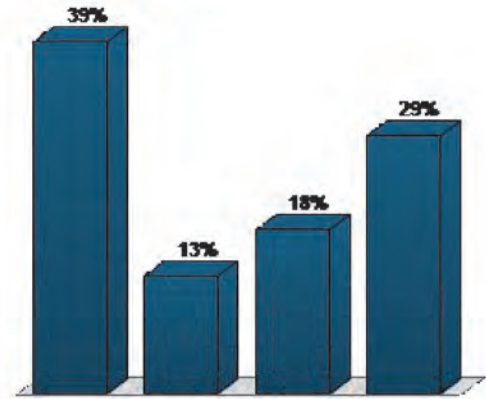
1. What's Your Favorite Color? (Multiple Choice)

	Responses	
	Percent	Count
Red	30.77%	8
Blue	30.77%	8
Orange	3.85%	1
Black	11.54%	3
Green	7.69%	2
Pink	11.54%	3
Yellow	3.85%	1
Totals	100%	26



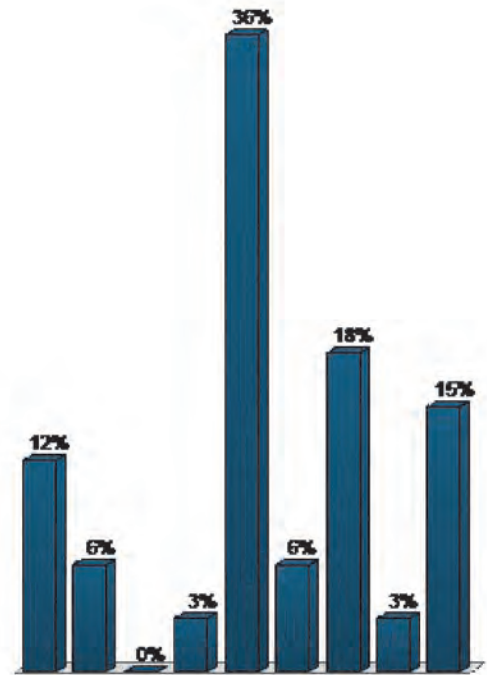
2. Do You Live or Work in the North Downtown Athens / Bethel Village Neighborhood? (Multiple Choice)

	Responses	
	Percent	Count
Yes, I live Here	39.47%	15
Work Here	13.16%	5
Live/Work Here	18.42%	7
No, but I love the Community Here	28.95%	11
Totals	100%	38



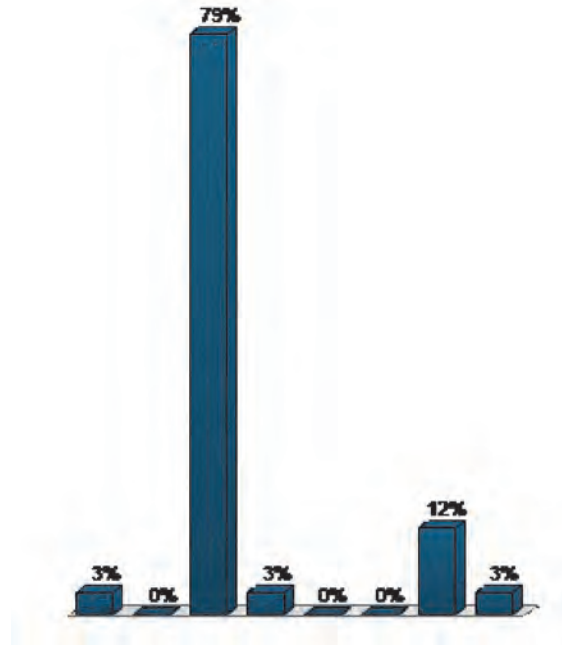
3. What Do You Like the Most About the North Downtown/Bethel Village Neighborhood (Multiple Choice)

	Responses	
	Percent	Count
Access to Neighborhood Amenities/Conveniences	12.12%	4
Churches/Place of Worship	6.06%	2
Close to Family/Friends	0%	0
Access to Employment/Jobs	3.03%	1
Housing Affordability	36.36%	12
Access to Public Transportation	6.06%	2
Great Location	18.18%	6
Great Community	3.03%	1
Other	15.15%	5
Totals	100%	33



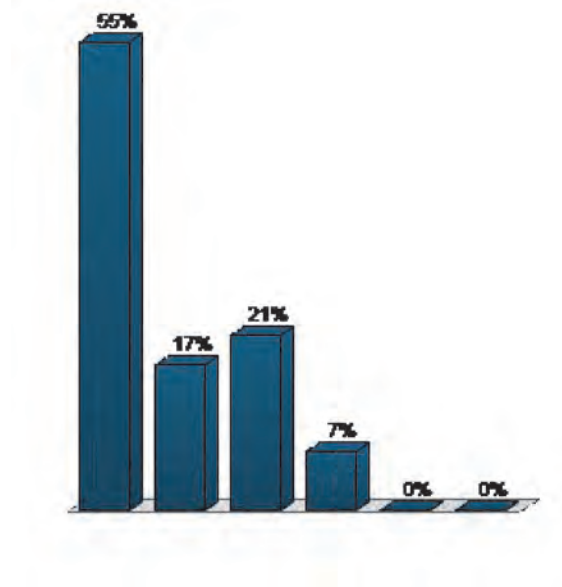
4. Main Concerns/Issues with the North Downtown/Bethel Village Neighborhood (Multiple Choice)

	Responses	
	Percent	Count
Lack of Shopping/Retail	2.94%	1
Lack of Jobs	0%	0
Crime/Safety	79.41%	27
High Cost of Housing	2.94%	1
Unsafe for Pedestrians/Walking	0%	0
Lack of Parks and Recreation Areas	0%	0
Lack of Youth Programs	11.76%	4
Lack of Public Transportation	2.94%	1
Totals	100%	34



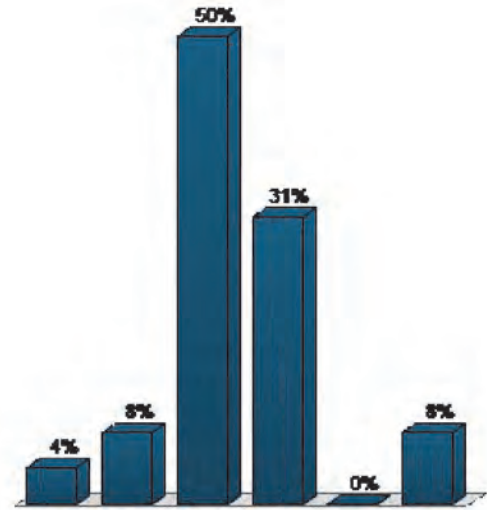
5. Your Primary Method of Transportation (Multiple Choice)

	Responses	
	Percent	Count
Your Own Car/Truck	55.17%	16
Public Transportation	17.24%	5
Walking	20.69%	6
Ride with Someone	6.9%	2
Other	0%	0
None	0%	0
Totals	100%	29



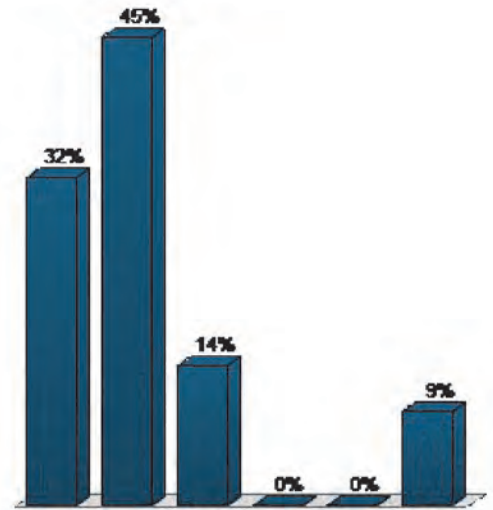
6. Concerns Heard in our Interviews: Safety Concerns in the Neighborhood (Multiple Choice)

	Responses	
	Percent	Count
Not An Issue to Me (I feel Safe)	3.85%	1
Important But There are More Important Items	7.69%	2
It is the Most Important Issue to Me (I don't feel safe)	50%	13
It Mainly seems to be from people outside the neighborhood	30.77%	8
I haven't heard anything	0%	0
No Comment	7.69%	2
Totals	100%	26



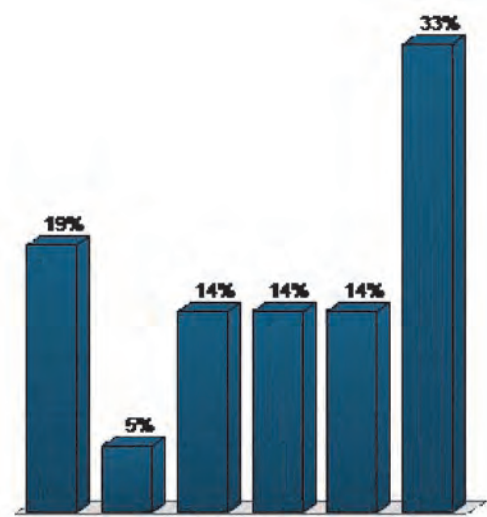
7. Concerns Heard in our Interviews: Safety Concerns with College Street (Multiple Choice)

	Responses	
	Percent	Count
Not An Issue to Me (I feel Safe)	31.82%	7
Important But There are More Important Items	45.45%	10
It is the Most Important Issue to Me (I don't feel safe)	13.64%	3
What, Haven't Heard About anything	0%	0
Where's Texas Street?	0%	0
No Comment	9.09%	2
Totals	100%	22



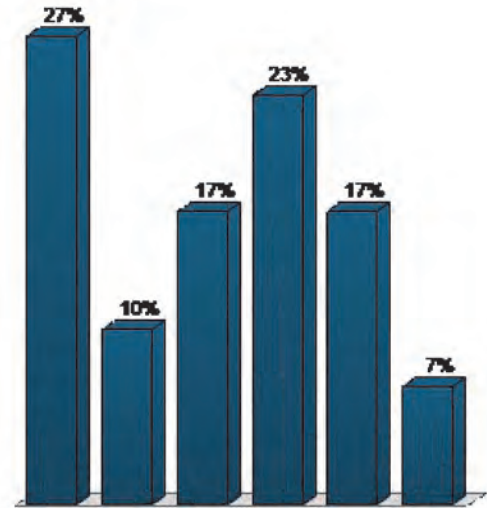
8. Concerns Heard in our Interviews:Schools (Multiple Choice)

	Responses	
	Percent	Count
I'm Happy with the Schools - Not An Issue to Me	19.05%	4
Important But There are More Important Items	4.76%	1
It is the Most Important Issue to Me – Schools for my children are my #1 priority	14.29%	3
Schools are OK but wish we had more choices	14.29%	3
I am NOT Happy with the Area Schools – need changes	14.29%	3
No Comment	33.33%	7
Totals	100%	21



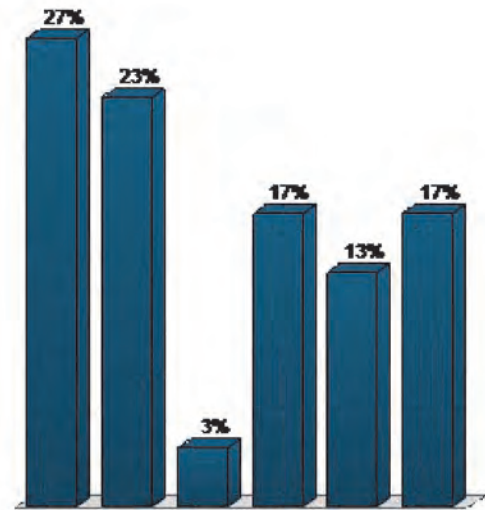
9. Concerns Heard in our Interviews:Shopping/Groceries (Multiple Choice)

	Responses	
	Percent	Count
Not An Issue to Me - (Easy to Shop/Many Choices)	26.67%	8
Important But There are More Important Issues	10%	3
It is the Most Important Issue to Me (No where to Shop)	16.67%	5
There are Some Choices but need More	23.33%	7
Need More Assistance/Help	16.67%	5
No Comment	6.67%	2
Totals	100%	30



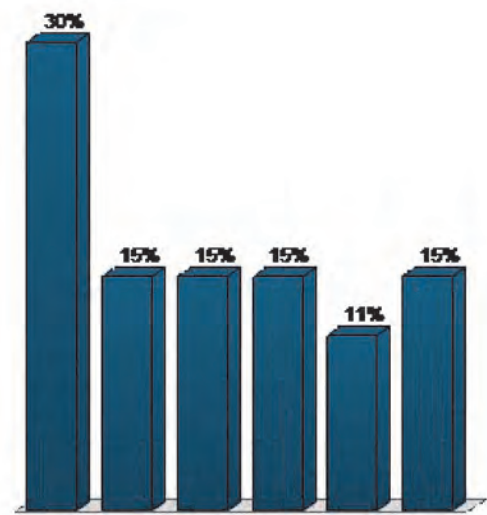
10. Concerns Heard in our Interviews:Parks – Trails – Open Space (Multiple Choice)

	Responses	
	Percent	Count
I'm Happy with Parks Nearby (Not An Issue to Me)	26.67%	8
Important But There are More Important Items	23.33%	7
It is the Most Important Issue to Me – Parks for my children are my #1 priority	3.33%	1
Parks are OK but wish we had more choices	16.67%	5
I am NOT Happy with the Area Park – need BIG changes	13.33%	4
No Comment	16.67%	5
Totals	100%	30



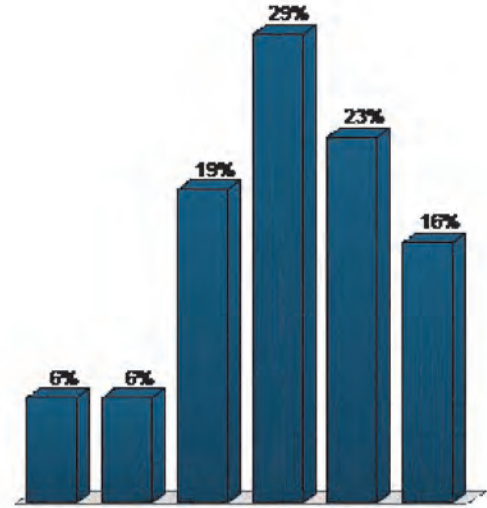
11. Concerns Heard in our Interviews: Restaurants (Multiple Choice)

	Responses	
	Percent	Count
I'm Happy with Restaurants Nearby (Not An Issue to Me)	29.63%	8
Important But There are More Important Items	14.81%	4
It is the Most Important Issue to Me – More Nearby Restaurants are my #1 priority	14.81%	4
Local Restaurants are OK but wish we had more choices	14.81%	4
I am NOT Happy with the Area Restaurants – need BIG changes	11.11%	3
No Comment	14.81%	4
Totals	100%	27



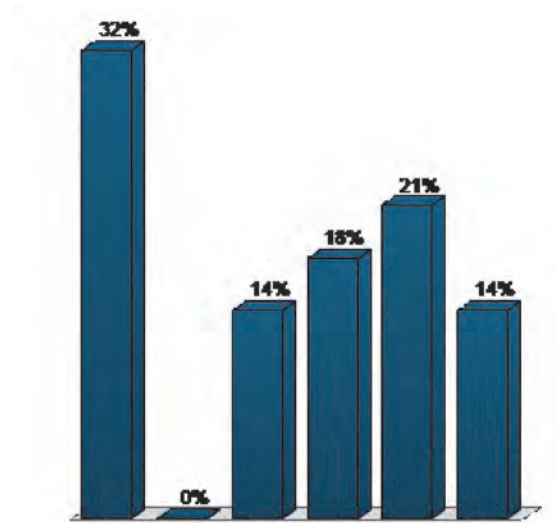
12. Concerns Heard in our Interviews:Childcare/After School Programs (Multiple Choice)

	Responses	
	Percent	Count
Not An Issue to Me - (Plenty of Choices)	6.45%	2
Important But There are More Important Issues to me	6.45%	2
#1 Most Important Issue to Me (children's needs)	19.35%	6
There are Some Choices but need More	29.03%	9
Need More Assistance/Help	22.58%	7
No Comment	16.13%	5
Totals	100%	31



13. Concerns Heard in our Interviews: Workforce Training / Adult Education (Multiple Choice)

	Responses	
	Percent	Count
This is Not An Issue to Me	32.14%	9
Important But There are More Important Items	0%	0
It is the Most Important Issue to Me – More Adult Education/Training is my #1 priority	14.29%	4
There are some local Education Opportunities but wish we had more choices	17.86%	5
I am NOT Happy with the Educational Choices in our Area – need BIG changes	21.43%	6
No Comment	14.29%	4
Totals	100%	28



14. Concerns Heard in our Interviews:Seniors / Senior Activities (Multiple Choice)

	Responses	
	Percent	Count
This is Not An Issue to Me	37.04%	10
Important But There are More Important Items	3.7%	1
It is the Most Important Issue to Me – More Senior Related Activities are my #1 priority	3.7%	1
Need dedicated Senior Housing and Center	37.04%	10
I am NOT Happy with the Senior Choices in our Area – need BIG changes	7.41%	2
No Comment	11.11%	3
Totals	100%	27

